

## INSTALLATION INSTRUCTIONS FOR EDF SERIES ELECTRONIC, SENSOR-ACTIVATED LAVATORY FAUCETS



EDF-100/150

### FAUCET VARIATIONS

-ISM Integral Spout Temperature Mixer

### SLOAN® LIMITED WARRANTY SUMMARY

Sloan Valve Company ("Sloan"), warrants its products against defects in materials and workmanship, excluding damage caused by matters beyond Sloan's reasonable control. Instructions for filing claims can be found in the Limited Warranty which can be obtained at [www.sloan.com](http://www.sloan.com) or by requesting a free copy by telephone at 888.756.2614. Sloan will repair or replace your defective product, or provide a refund, as your exclusive remedy. This is only a general summary of Sloan's Limited Warranty so it is important to note that the specific terms, conditions, limitations and exclusions, including the duration of warranty coverage for your particular Sloan product, are contained in the actual Sloan Limited Warranty. The Limited Warranty is subject to applicable laws in your country, state, province or other jurisdiction—and disputes arising under the Limited Warranty are to be resolved by binding arbitration unless you provide Sloan with an opt-out notice no later than 30 days after your purchase date. In case of a conflict with this summary, the terms and conditions set forth in the complete Limited Warranty will prevail.

### PRIOR TO INSTALLATION

Prior to installing the Sloan EDF faucet, install the items listed below. Also, refer to rough-in illustrations.

- Lavatory/sink
- Drain line
- Hot/Cold water supply lines (-ISM) or pre-tempered water supply line (Non-ISM)

**Note:** -ISM is a mechanical mixing valve

#### IMPORTANT:

- **ALL PLUMBING SHOULD BE INSTALLED IN ACCORDANCE WITH APPLICABLE CODES AND REGULATIONS.**

- **FLUSH ALL WATER LINES PRIOR TO MAKING CONNECTIONS.**
- **KEEP THREAD SEALANT OUT OF YOUR WATERWAY TO PREVENT COMPONENT PART DAMAGE! DO NOT USE ANY SEALANT ON COMPRESSION FITTINGS.**

#### Trim Plates

When the EDF faucet is installed on a sink that has three (3) hole punchings, a trim plate should be used. **Trim plates must be specified and ordered separately.**

**SFP-11** Trim Plate for 4" (102 mm) Centerset Sink

**SFP-22** Trim Plate for 8" (203 mm) Centerset Sink

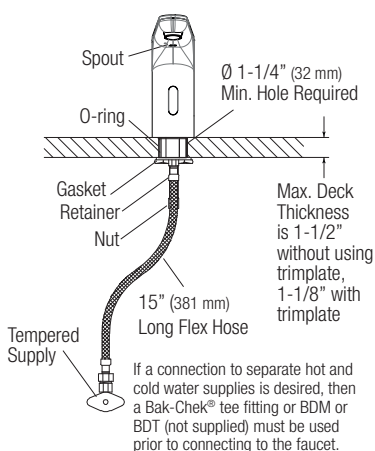
### TOOLS REQUIRED FOR INSTALLATION

- 13 mm open wrench or nut driver for faucet retainer nut
- 5/8" open end wrench for female end of flex hose

### FAUCET ROUGH-IN – EDF-100/150

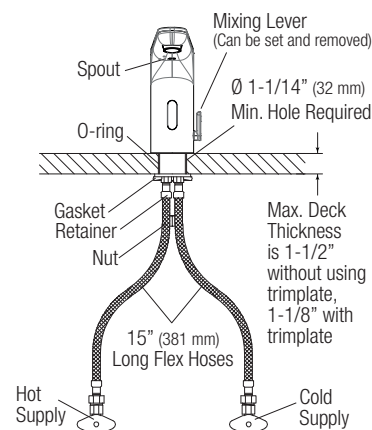
#### EDF-100/150

Faucets with Single Line Water Supply

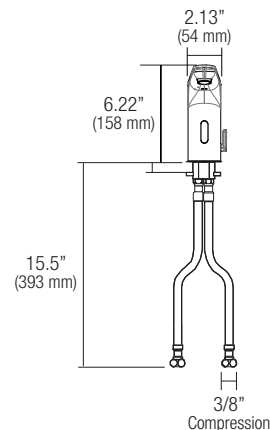


#### EDF-100/150 -ISM

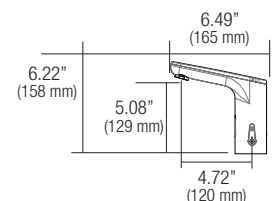
Faucets with Hot/Cold Water Supply



#### FRONT VIEW

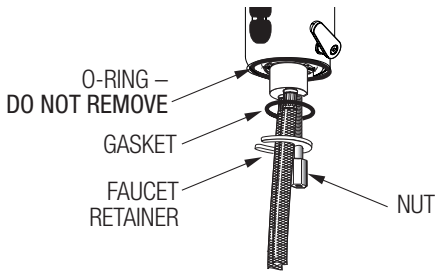


#### SIDE VIEW



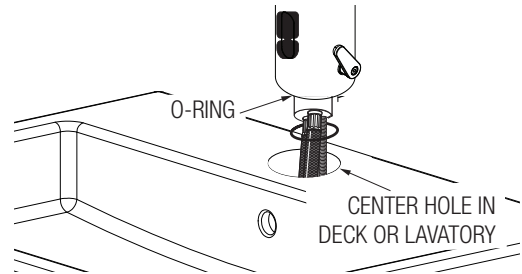
## 1 – INSTALL FAUCET

- A** Remove nut, faucet retainer and gasket.  
**DO NOT** remove the O-Ring from the base of faucet.  
**DO NOT** remove sensor label until step 5.



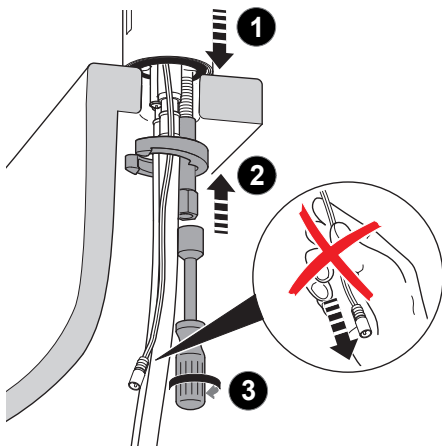
- B** Install faucet with o-ring into the center hole in deck or lavatory – **1-1/4" (32 mm) minimum hole required.**

**NOTE:** If installing the faucet on a three (3) hole sink, a trim plate should be installed at this time.



## 2 – SECURE FAUCET TO DECK

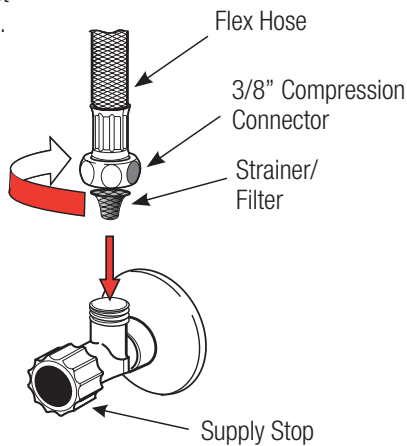
Secure Retainer/Gasket onto Mounting Stud and around hose(s) and wire. Secure Revolving Nut with 13 mm hex driver or socket.  
**DO NOT** pull down on wire.



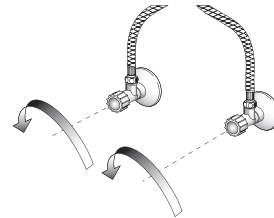
## 3 – INSTALL FLEX HOSE ONTO SUPPLY STOP(S)

**IMPORTANT: FLUSH DIRT, DEBRIS, AND SEDIMENT FROM SUPPLY LINE(S) BEFORE CONNECTING FLEX HOSE(S).**

- A** Install flex hose onto supply stop. Be sure the filter/gasket is installed into the hose end.



- C** Open supply stop(s).

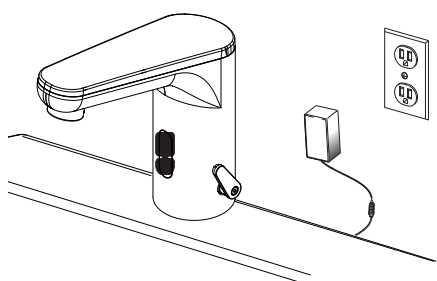


**NOTE:**

If water flows immediately upon opening supply stops, the solenoid is in the open position, and will be cycled to the closed position during the sensor startup sequence in Step 5.

- B** Tighten the flex hose(s) securely to the supply stop(s). **Do not overtighten;** excess force can damage filter/gasket.

#### 4 – CONNECT TO THE POWER SUPPLY (HARDWIRED MODELS ONLY)

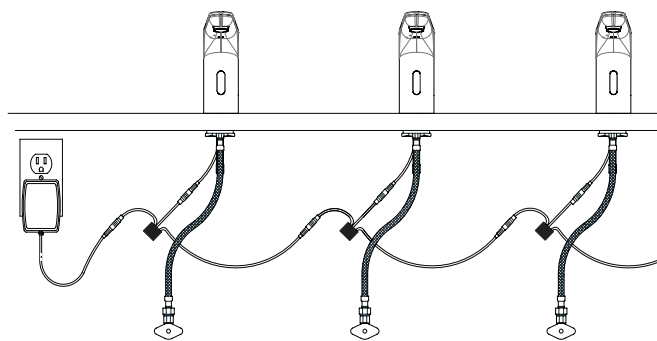


Electrical outlet must be within 24" of faucet unless extensions are used.



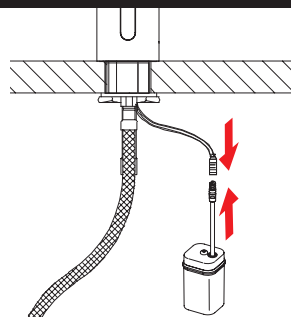
If EAF-37/70-A in ceiling, use 10 ft extension cable (EAF-17-A, 3200 mm).

Electrical Connections for connecting up to six (6) EDF Faucets using one (1) adapter and EAF-44 Power Splitters



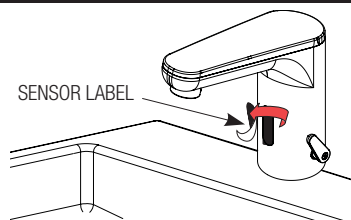
**NOTE:** One (1) EAF-44 Power Splitter required for each faucet in daisy chain connection.

#### 4 – CONNECT TO THE POWER SUPPLY (BATTERY POWERED MODELS ONLY)



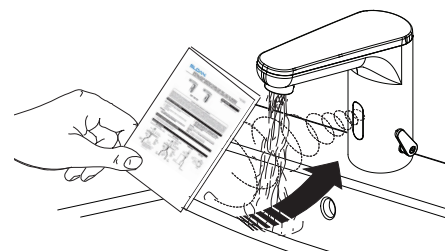
Connect the cable from the faucet to the cable from the battery pack, ensuring the lines marked on the cable ends align.  
Use provided Velcro to secure battery pack under deck.

#### 5 – REMOVE LABEL FROM SENSOR WINDOW



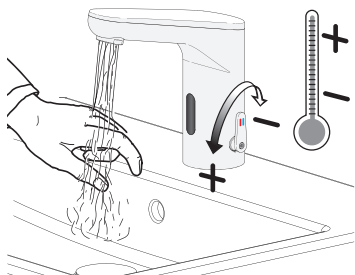
#### 6 – ACTIVATE FAUCET

- A** Activate Faucet by holding installation instructions approximately 1-1/2" (38 mm) in front of the sensor window until red light appears, then remove instruction sheet. Faucet will run for four (4) seconds and the range will automatically adjust to its environment. Wait ten (10) seconds after water shuts off before using faucet.
- B** Activate Faucet and check for leaks. If faucet does not function, refer to the Troubleshooting section of this instruction manual.

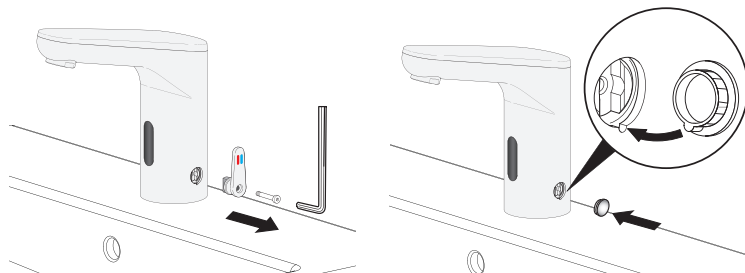


## 7 – SET AND FIX TEMPERATURE (-ISM MODELS ONLY)

**A** Adjust lever to desired temperature.



**B** **Optional** – To fix temperature, set lever to the desired position, then remove lever and plug hole with cap from lever.



## 8 – BATTERY REPLACEMENT (BATTERY POWERED MODELS ONLY)

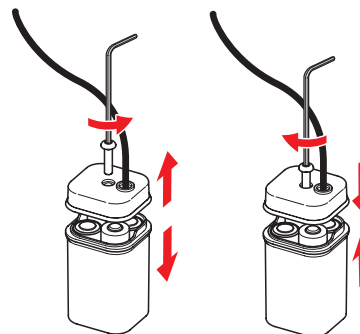
**NOTE:** Replace battery when RED LED indicator flashes each time faucet is in use or when faucet stops functioning.

**A** Loosen cover screw and remove cover from battery pack.

**B** Install four (4) new AA batteries as indicated by the (+) and (-) symbols inside the battery compartment.

**C** Replace battery pack lid, ensuring the arrows on the side align. Tighten screw.

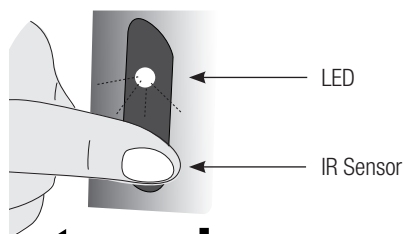
**IMPORTANT:** Ensure batteries are installed with proper polarity. Improper polarity will not harm the faucet, but will cause the faucet not to operate.



## IR-CLICK FEATURE

The IR-Click is a sensor detector located in the sensor window of the faucet spout that allows the user to place the faucet into the following function modes: Continuous Run, Temporary Off and Auto Set Range Adjustment.

To use the IR-Click function, first enter Programming Mode by covering bottom half of sensor with finger, waiting 2 seconds for Orange light, then removing finger. When in programming mode, each touch of IR-Click will produce a quick Orange flash. Programming Mode window lasts five (5) seconds before closing. If a function is not enacted within 5 seconds of entering Programming Mode, enter Programming Mode again.

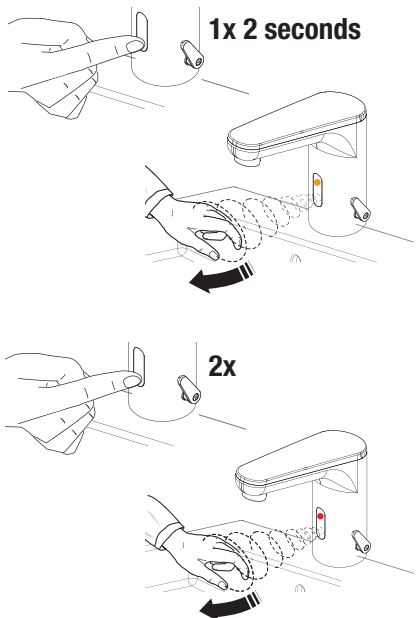


**touch**

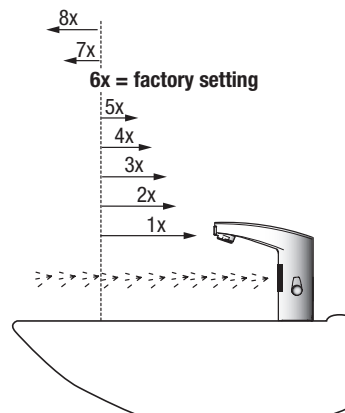
Function	Touch IR Sensor	LED Signal
Temporary OFF (2 min)	<ol style="list-style-type: none"> <li>(1) time for 2 seconds</li> <li>(2) times (double touch)</li> </ol>	<ol style="list-style-type: none"> <li>LED Orange (1)</li> <li>LED Red pulsating flashes</li> </ol>
Reset:	(1) time or will reset automatically after 2 mins	
Continuous Run 2 min default setup (adjustable from 1-20 min)	<ol style="list-style-type: none"> <li>(1) time for 2 seconds</li> <li>(1) time for 3-5 seconds</li> </ol>	<ol style="list-style-type: none"> <li>LED Orange (1)</li> <li>Water flows after releasing</li> </ol>
Reset:	(1) time or will reset automatically after 2 mins	
Auto Set Range Adjustment	<ol style="list-style-type: none"> <li>(1) time for 2 seconds</li> <li>(2) times (double touch)</li> <li>(1) time for 4 seconds then hold until requested range is reached</li> <li>Release</li> </ol>	<ol style="list-style-type: none"> <li>LED Orange (1)</li> <li>LED Red blinks</li> <li>LED Red (1-8)</li> <li>LED Orange (1)</li> </ol>
Details Shown in Next Section		

## SENSOR RANGE ADJUSTMENT

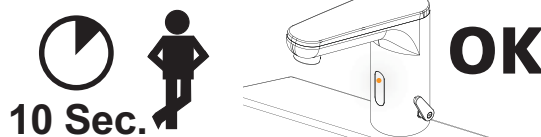
**A** IR activation (see page 4). To enter programming mode, place finger on IR-Click (covering bottom half of sensor) for 2 seconds. When ORANGE light appears, remove finger. Touch sensor 2 times and remove. Light on sensor will blink RED to indicate programming mode.



**B** Cover IR-Click (bottom half of sensor), LED flashes RED 4 times. Hold IR-Click until LED flashes 1 to 8 times from minimum to maximum range (see diagram below). Release when desired range is reached. Faucet will enter calibration mode. Water will turn on and off during this time.



**C** Wait until LED flashes ORANGE. Programming Mode is complete and faucet is ready to use.



## 12/24/48 LINE PURGE FEATURE

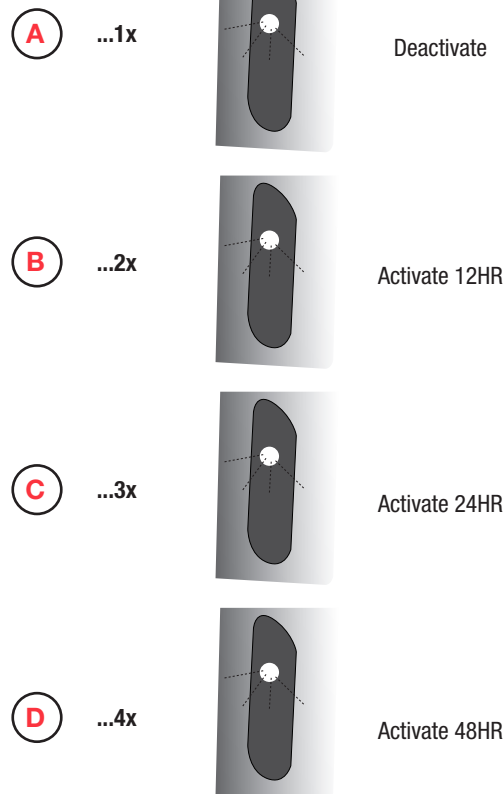
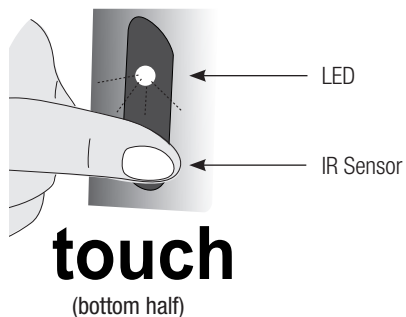
To enable the purge feature on faucet:

Touch & hold IR Click (bottom half of sensor) for (2) seconds until the ORANGE LED flashes – release IR – this enters the programming mode – there is only (5) seconds to begin selecting the programming mode.

To select the Purge Mode; Touch and hold IR Click – after (24) seconds, a RED LED will begin flashing:

- 1 Flash = Disables Line Purge (OFF).
- 2 Flashes = Enables (12) Hour Purge (ON, faucet purges for (2) minutes every (12) hours after last activation).
- 3 Flashes = Enables (24) Hour Purge (ON, faucet purges for (2) minutes every (24) hours after last activation).
- 4 Flashes = Enables (48) Hour Purge (ON, faucet purges for (2) minutes every (48) hours after last activation).

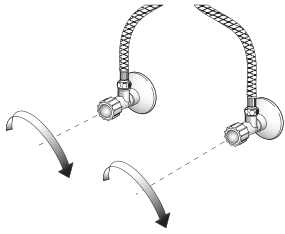
Release IR button after selecting Line Purge mode setting. When releasing button, the faucet will flash (1) ORANGE LED indicating ready to use.



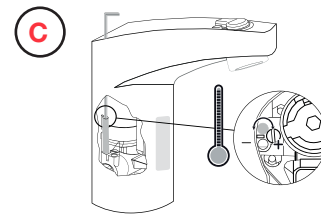
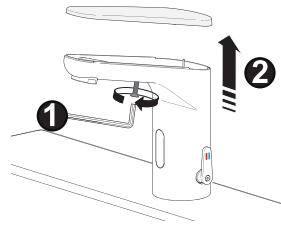
## HOT LIMIT STOP ADJUSTMENT

The -ISM faucet uses a mechanical mixing design, factory setting is full flow of hot water from supply, adjusting the limit screw clockwise only reduces the rotation of the -ISM mixing lever to hot. The faucet does not have pressure or thermostatic compensation control. Follow all applicable plumbing codes and regulation for temperature control.

- A** Close supply stop(s).

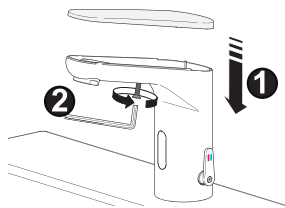


- B** Loosen screw with 2.5 mm hex key and remove cap.

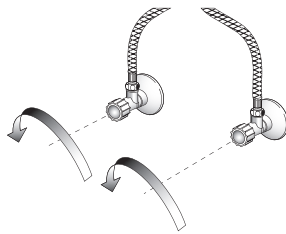


- Use a 2 mm hex key to rotate clockwise to reduce hot water flow (limits handle rotation to hot)
- Adjust temperature to desired limit
- Adjust screw to meet limit setting

- D** Replace cover and tighten screw with 2.5 mm hex key.



- E** Open supply stop(s).



- F** Wait ten (10) seconds before using faucet.



## OPERATION

As the user's hands enter the beam's effective range, the beam is reflected back into the sensor receiver and activates the solenoid valve allowing water to flow from the faucet. Water will flow until the hands are removed or until the faucet reaches its automatic time out setting.

## CARE AND CLEANING

**DO NOT USE** abrasive or chemical cleaners (including chlorine bleach) to clean faucets that may dull the luster and attack chrome or special decorative finishes. Use **ONLY** mild soap and water, then wipe dry with clean cloth or towel.

**DO NOT** spray cleaner directly onto flushometer; instead, spray into a clean cloth and then wipe down the flushometer. While cleaning the bathroom tile, protect the faucet from any splattering of cleaner. Acids and cleaning fluids will discolor or remove chrome plating.

## TROUBLESHOOTING

### 1. Faucet does not function.

- A. Adhesive packaging label affixed over sensor eye. Remove adhesive label from sensor eye.
- B. Permanent Off Activated shown by RED flashing LED. Touch button on sensor window for 2 seconds, RED flashing LED will stop and confirmed with ORANGE LED.

### 2. Faucet does not deliver any water with hands in sensor range.

**Indicator: Solenoid valve produces an audible "click."**

- A. Water supply stop(s) closed. Open water supply stop(s).
- B. Water supply stop strainer(s) clogged. Turn off water at supply stop(s). Remove, clean and reinstall water supply stop strainer(s). Replace strainer(s), if required. Turn on water at supply stop(s).

**Indicator: Solenoid valve does not produce an audible "click."**

- A. Battery low. Replace battery (refer to battery replacement).

### 3. After removing label water does not flow.

- A. Use this installation guide as a target by placing it in front of the sensor (approx. 1-1/2" away) until water begins flowing, then remove installation instructions from sensor. Water will stop flowing, wait 10 seconds before using faucet.

### 4. Faucet delivers only a slow flow or dribble when sensor is activated.

- A. Water supply stop(s) are partially closed. Completely open water supply stop(s).
- B. Water supply stop strainer(s) clogged. Turn off water at supply stop(s). Remove, clean and reinstall water supply stop strainer(s). Replace strainer(s), if required. Turn on water at supply stop(s).
- C. Spray head is clogged. Remove, clean, and reinstall spray head. Replace spray head, if required.

### 5. Faucet does not stop delivering water or continues to drip after user is no longer detected.

- A. Clean solenoid valve – Turn off the water stops, remove the cover with a 2.5-mm hex key, disconnect the battery and the solenoid from the sensor assembly. Remove the solenoid using a 6-mm hex key. Clean the solenoid diaphragm and the solenoid base in the faucet of plumbing debris with a dry towel. Re-install the solenoid (ensuring not to overtighten it), reconnect the Solenoid and Battery (if applicable) to the Sensor Assembly, and reattach the cover. Before turning the water back on, put hand in front of sensor and listen for click. Once click is confirmed, solenoid is working. Turn on water to the faucet and test faucet activation and flow. If issue persists, flush lines at stops as well to remove any plumbing debris in the line. Once flush is complete, check supply hose filters for debris.

### 6. LED indicator blinks RED when faucet is in use.

- A. Battery low. Replace battery (refer to battery replacement).

### 7. The water temperature is too hot or too cold on a faucet connected to hot and cold supply lines.

- A. Supply stops are not adjusted properly. Adjust supply stops.
- B. For models with integral mixing valve – Mixing valve is set improperly for the water temperature desired. Rotate mixing valve handle clockwise to decrease water temperature or counterclockwise to increase water temperature.

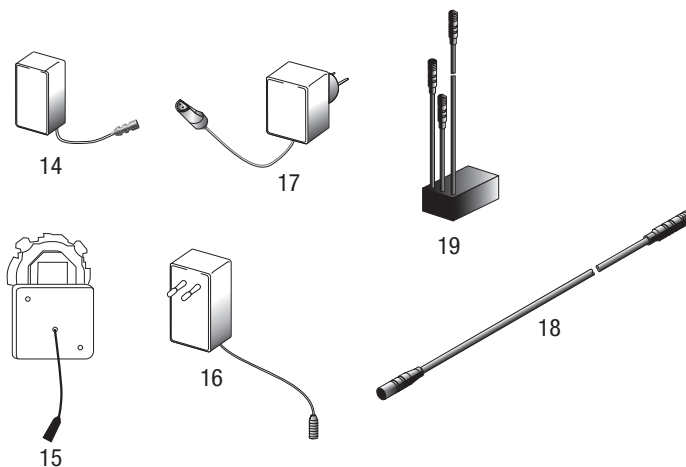
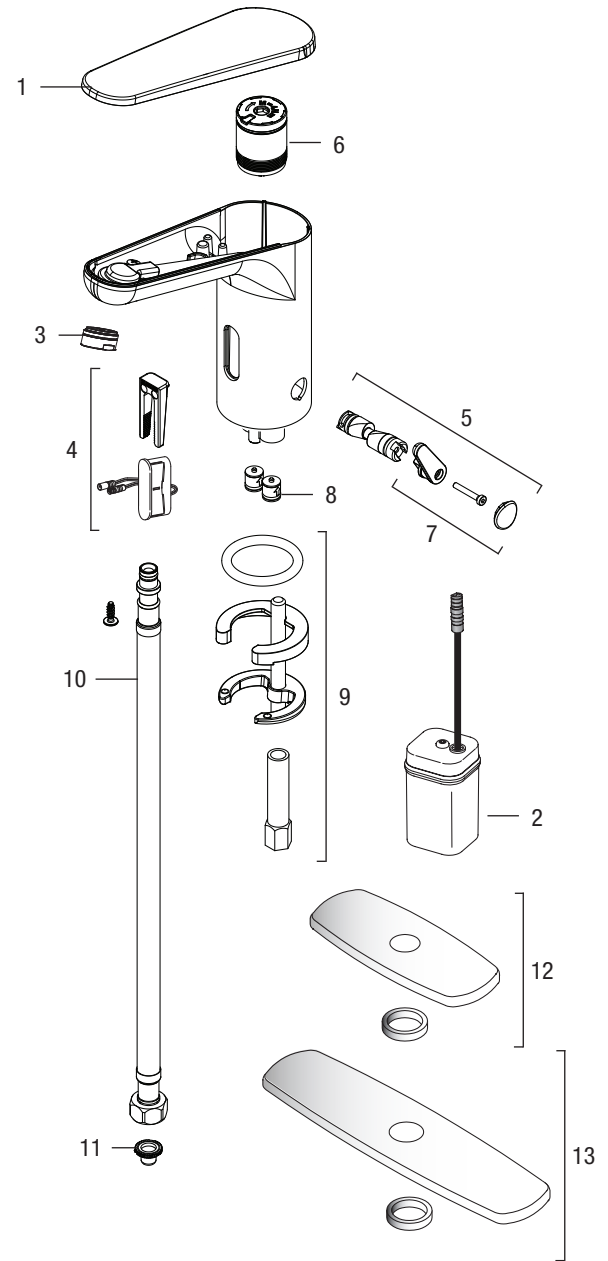
**When assistance is required, please contact  
Sloan Technical Support at  
1.888.SLOAN.14 (1.888.756-2614)**

## PARTS BREAKDOWN — EDF-100/150

Item No.	Code No.	Part No.	Description
1	—	EDF-2	Cover
2	—	EDF-3	Battery Pack
3	<b>0335036</b>	EAF-63	Spray Head 0.5 gpm
	<b>0335029</b>	EAF-51	Spray Head 0.35 gpm
4	—	EDF-4	Sensor with Fixing Clip Kit
5	—	EDF-5	Mixer Handle Assembly and Cartridge Kit
6	<b>0335001</b>	EAF-2	Solenoid Valve Cartridge
7	—	EDF-6	Integral Side Mixer Handle Kit
8	<b>0335006</b>	EAF-8	Bak-Cheks® (2 per kit), -ISM Models only
9	<b>0335000</b>	EAF-1	Faucet Mounting Kit
10	<b>3335023</b>	EAF-1008	Flexible Supply Hose (2 required for ISM models)
11	<b>0335007</b>	EAF-9	Filter (2 required for ISM models)
12	<b>0362011</b>	SFP-11	4" Trim Plate
13	<b>3362022</b>	SFP-22	8" Trim Plate

### For Hardwired EDF Faucets

14	<b>0335009</b>	EAF-11	6 VDC Plug-in Adapter 100-240 VAC/6.75 VDC (US)
15	<b>0335037</b>	EAF-37	6 VDC Box Mount Adapter 100-240 VAC/6.75 VDC
16	<b>0335038</b>	EAF-38	90-264 VAC/6.75 VDC Plug-In Adapter (EURO)
17	<b>0335039</b>	EAF-39	90-264 VAC/6.75 VDC Plug-In Adapter (UK)
18	<b>0335024</b>	EAF-24-A	Extension Cable 11-13/16 Inches (300 mm)
	<b>0335025</b>	EAF-25-A	Extension Cable 47-1/4 Inches (1200 mm)
	<b>0335015</b>	EAF-17-A	Extension Cable 126 inches (3200 mm)
19	<b>0335044</b>	EAF-44	Power Splitter (one (1) per faucet when using daisy chain power)



**When assistance is required, please contact  
Sloan Technical Support at  
1.888.SLOAN.14 (1.888.756-2614)**

The information contained in this document is subject to change without notice.

**SLOAN VALVE COMPANY • 10500 SEYMOUR AVENUE • FRANKLIN PARK, IL 60131**

Phone: 1.800.982.5839 or 1.847.671.4300 • Fax: 1.800.447.8329 or 1.847.671.4380 • sloan.com