

## CODE NUMBER

34001003

## DESCRIPTION

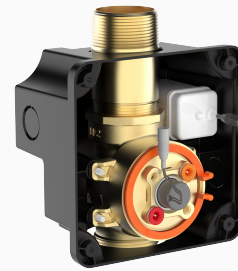
1.6/0.8 gpf, Filtered, Polished Chrome Finish, Fixture Connection Rear Spud, Dual Flush, Battery with Hardwired Option, TruFlush Concealed Manual Electronic Hardwired Water Closet Flushometer.

## DETAILS

- Flush Volume: 1.6/0.8 gpf (6.0/3 Lpf)
- Finish: Polished Chrome (CP)
- Power Type: Battery with Hardwired Option
- Battery Life: 5 years
- Bypass: Filtered
- Valve Body Material: Semi-red Brass
- Fixture Type: Water Closet
- Fixture Connection: Rear Spud

## FEATURES

- TruFlush Electronic Dual Flush valve provides accurate flush volume
- Piston color-coded by flush volume for easy identification
- High efficiency with low consumption
- Electronic Solenoid actuated valve
- Heavy-duty rough brass and corrosion-resistant valve body
- Replaceable piston assembly accessible through front wall plate
- Concealed shut off sleeve adjusts flow rate
- Safety collar locks activation assembly to prevent access of internal components without shutting off water
- Piston with inbuilt filter to ensure consistent, long-lasting performance



## COMPLIANCES & CERTIFICATIONS



(UPC Certified)

## RECOMMENDED SPECIFICATION

Valve shall be concealed with front access wall plate smaller than 7" x 7" and shall have integrated control stop. Valve shall be in compliance with ASTM Alloy Classification for Semi-Red Brass.

## ELECTRICAL SPECIFICATIONS

- Arming Delay: 8 seconds
- Battery Life: 5 years
- Control Circuit: 6 VDC Input/Solid State
- Solenoid Operator: 6 VAC
- Transformers (specify separately):
  - EL-386 (Up to 1 flushometer)
  - EL-451 (up to 6 flushometers)

## VALVE OPERATING PRESSURE (FLOWING)

20-80 PSI (138-552 kPa). Specific fixtures may require greater minimum flowing pressure - consult manufacturer requirements.

## DOWNLOADS

- [TRF Electronic Dual Flush Valve Installation Instructions](#)

## NOTES

All information contained within this document subject to change without notice.

Battery life varies according to actual usage and restroom conditions.

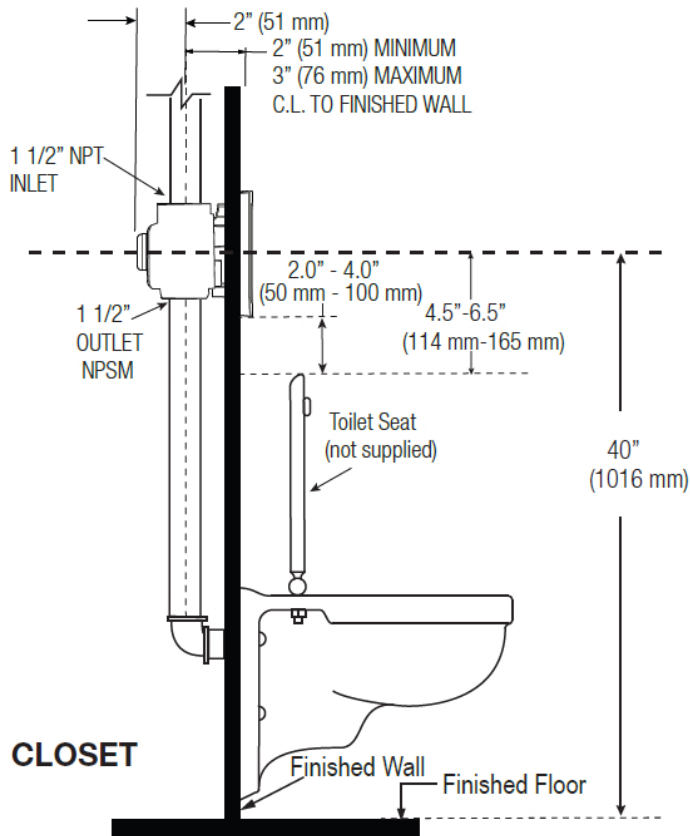
## WARRANTY

[View Warranty Information](#)

Sloan 10500 Seymour Ave, Franklin Park, IL 60131

Phone: 800.982.5839 • Fax: 800.447.8329 • [sloan.com](http://sloan.com)

**ROUGH-IN**



**NOTE :** Flush Connections shown in dotted lines not included.

